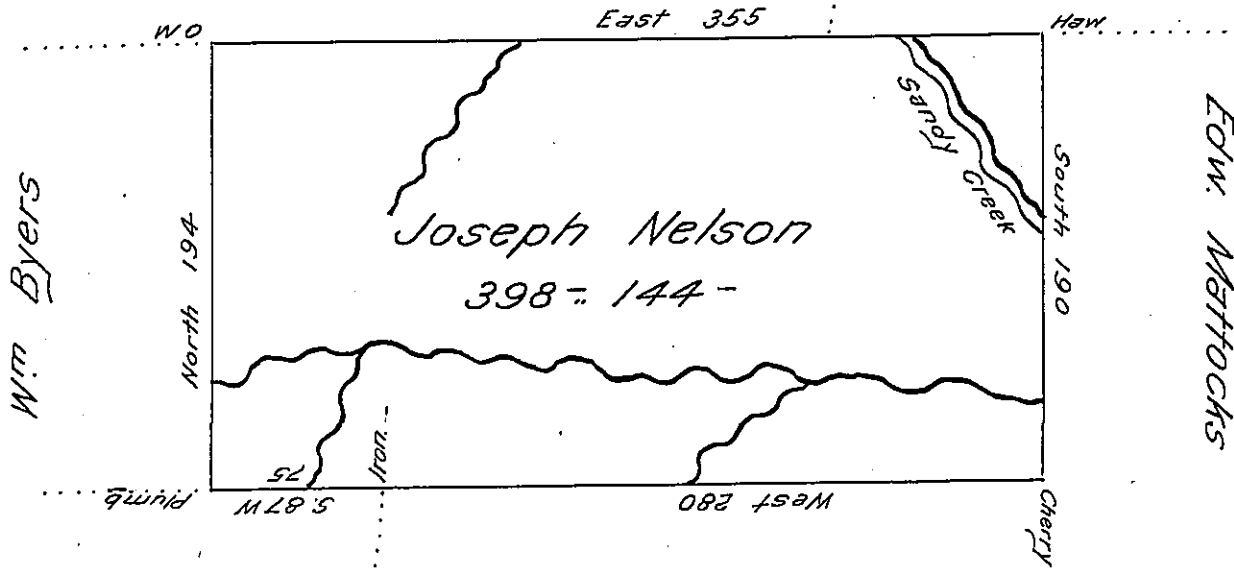


R. Byers

John Arbuckles



Donation Land Geo. Guess

Situate on the waters of Sandy Creek in District No 3 Allegany County; Containing three hundred ninety eight Acres, one hundred forty four perches and allowance Surveyd 7. June 1800 on Actual Settlement made by Joseph Nelson in 1797.

Surveyor General  
of  
Pennsylvania

Ben Stokely D.S.

IN TESTIMONY that the above is a copy of the original remaining on file in the Department of Internal Affairs of Pennsylvania, made conformably to an Act of Assembly approved the 16th day of February, 1833, I have hereunto set my Hand and caused the Seal of said Department to be affixed at Harrisburg, this nineteenth day of June 1906.

*Isaac B. Johnson*  
Secretary of Internal Affairs.